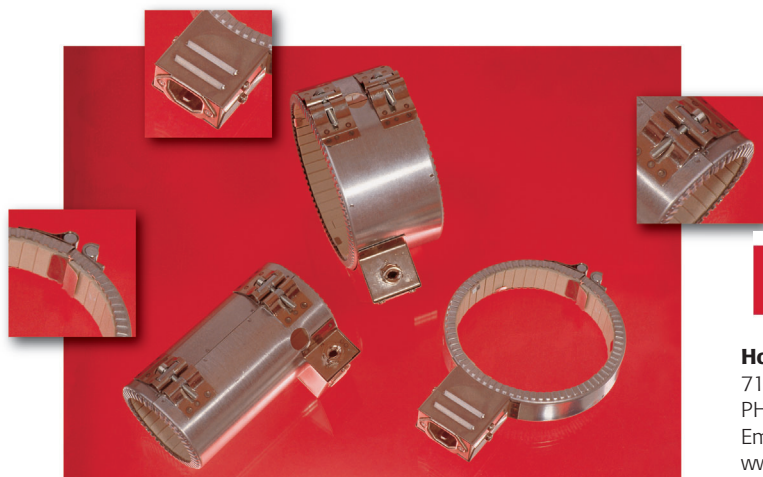


# Heaters with Ceramic insulation



intelligent heating worldwide

## Hotset America Corporation

713 Kite Road | Swainsboro, GA 30401 | USA  
 PH: + 912-289-1844 Fax: +866.496.4123  
 Email: usa@hotset-worldwide.com  
 www.hotset-worldwide.com

## Technical data

### Jacket material:

FAL

### Wall thickness respectively deposition:

~ 11 mm

### Operating temperature:

Up to 400°C max\*

\*Measured at the surface of the heated side

### Load:

Up to 6,5 Watt/cm<sup>2</sup>

### Operating voltage:

Standard 230 Volt, others available on request

### High voltage stability:

1000 Volt AC

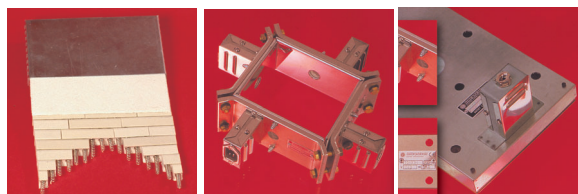
### Insulation resistance:

cold  $\geq$  1 MOhm at 500 Volt DC

### Capacity tolerance:

$\pm$  5%

- Used on all current types of machine in the injection moulding and extrusion industry
- Proven technique using high surface loads
- High electrical load
- Ring, flat and frame shape
- With cut outs and holes available
- With thermocouple connectors
- With brass baffle plate for better heat distribution as well as by-pass of grooves and holes
- Simple assembly
- Multipart design - respectively segment design



www.elektrowaermetechnik.de

info@elektrowaermetechnik.de

Ihne & Tesch GmbH · D-58507 Lüdenscheid · Telefon +49(0)23 51/6 66-0 · Keller, Ihne & Tesch KG · D-68623 Lampertheim · Telefon +49(0)62 41/9 88 08-0  
 Ihne & Tesch GmbH · D-90441 Nürnberg · Telefon +49(0)9 11/9 66 78-0 · Keller, Ihne & Tesch GmbH · A-3350 Haag · Telefon +43(0)74 34/4 38 80  
 Celtic S.A.R.L. · F-77290 Mitry-Mory · Téléphone +33(0)1 60 21 21 80 · KIT Electroheat Limited · UK-Hants SO24 0RE · Phone +44(0)19 62/73 88 00



Subject to technical alteration